

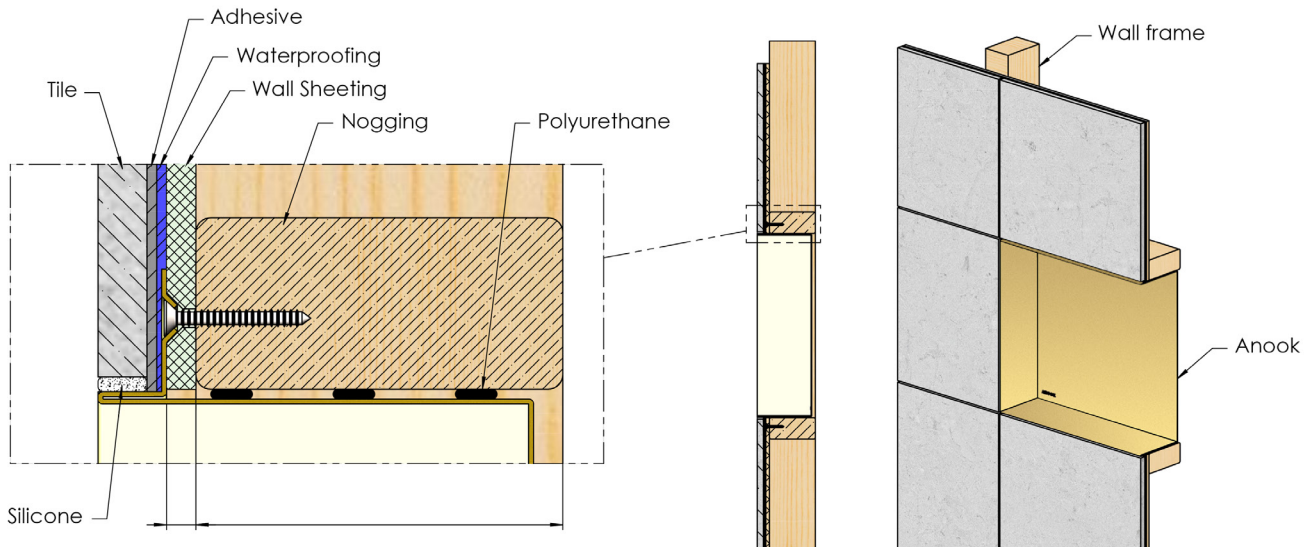


ART INTERNATIONAL

PLUMBING & BATHROOMWARE

ANOOK® SHOWER NICHE

Timber Stud Wall Installation



Installation Instructions:

- Step 1: Select location for Anook® installation.
- Step 2: Install bracing / mounting timbers as required to suit the Anook® size selected.
- Step 3: Install wall sheeting to wall frame.
- Step 4: Using Anook® as a template, mark fixings location on sheeting.
- Step 5: Drill 4mm pilot holes to a depth 30mm.
- Step 6: Countersink the wall sheeting with tool supplied, to allow flush fitment of Anook®.
- Step 7: Position the Anook® level in the opening and install supplied fixings.
- Step 8: Apply waterproofing to the perforated bonding flange and sheeting junction.
- Step 9: Ensure waterproofing has cured prior to commencing tiling.



Scan QR Code for
Installation Instruction
Animated Video



ART AUSTRALIA
PLUMBING & BATHROOMWARE

PROUDLY DISTRIBUTED BY:



ART NEW ZEALAND
PLUMBING & BATHROOMWARE

NSW, Victoria & ACT

134 Gilba Road Girraween, NSW 2145
sales@artaust.com.au | www.artaust.com.au
Phone: 02 9636 2131 | Fax: 02 9636 2498

Queensland & NT

Unit 1, 10-12 Glasson Drive, Bethania QLD 4205
salesqld@artaust.com.au | www.artaust.com.au
Phone: 07 3805 6664 | Fax: 07 3805 6668

New Zealand

sales@artnz.co.nz | www.artnz.co.nz
Phone: 0800 642 184

OUR
BRANDS
ARE:



Find us on Facebook and Instagram
@artplumbinginternational and
@artplumbingnewzealand