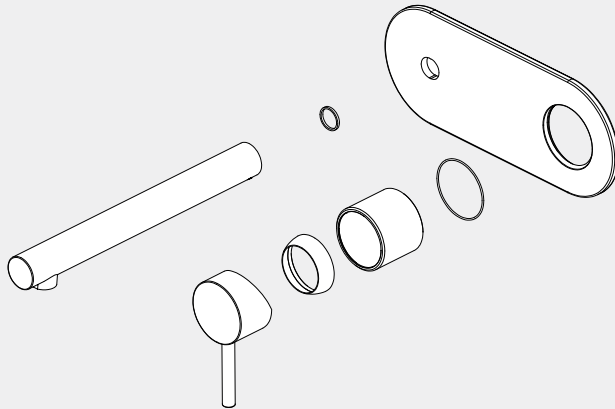


Dolce II Basin/Bath Mixer Trim Kits Only

Nero



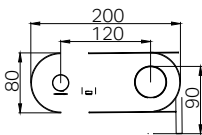
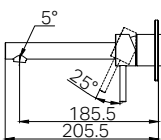
Lead Free



Version : 202506



Drawing








Specifications

Watermark License
WM-060073
Temperature Rating
Min 1 °C - Max 75 °C
Pressure Rating
Min 150kpa - Max 500kpa

Packing Includes

1 x Trim Kits
1 x Extra Aerator(Without Flow Restrictor)

Finish & SKU

- | | | |
|---|---|--|
|  Chrome
25B007CH |  Matte Black
25B007MB |  Gun Metal
25B007GM |
|  Brushed Gold
25B007BG |  Brushed Nickel
25B007BN | |

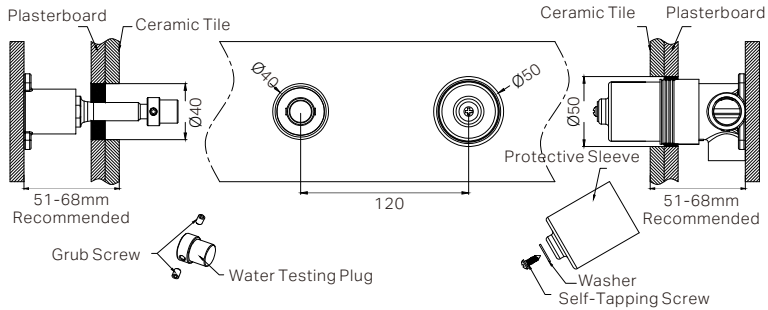
*Dimensions are nominal measurements only.

INSTALLATION INSTRUCTIONS

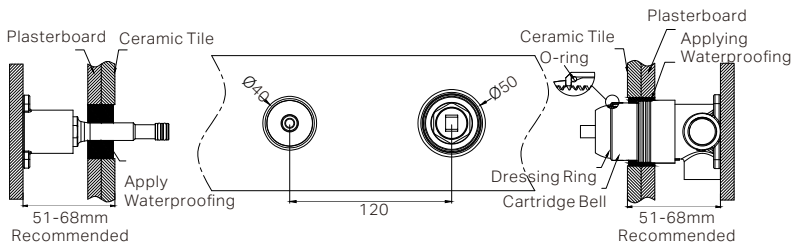
GENERAL INSTRUCTIONS:

- This product must be installed by a licensed plumber. Ensure that your plumbing installation conforms to the Australian/New Zealand Standard AS/NZS 3500.
- All pipework must be thoroughly flushed prior to the installation of the mixer. In-line filters must be fitted on both hot and cold supplies to prevent foreign particles from damaging the ceramic cartridge.
- All outlets used primarily for personal hygiene must deliver water at a safe temperature in accordance with regional regulations.

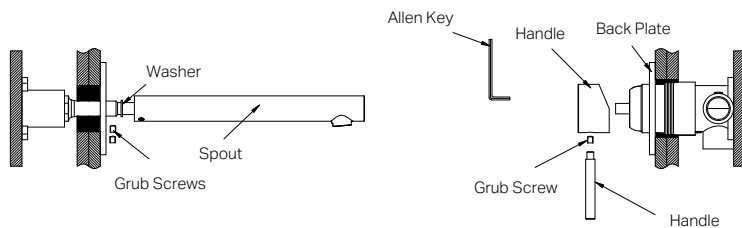
INSTALLATION STEPS



1. Drill a $\varnothing 50\text{mm}$ and a $\varnothing 40\text{mm}$ hole in the ceramic tile, then position it as shown in the above diagram.
2. Undo the self-tapping screw to remove the protective sleeve, and release the grub screws to remove the water testing plug.



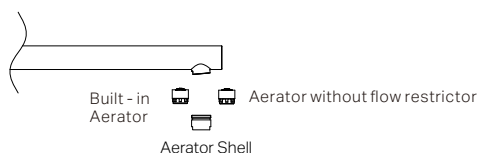
3. Slide the cartridge bell onto the body and insert the O-ring to the groove of the cartridge bell.
4. Apply waterproof treatment to the area in the diagram above.
5. Tighten the dressing ring onto the cartridge bell.



6. Slide the back plate and washer onto the wall, set the spout in place, and secure it tightly using the grub screw.

7. Insert the handle onto the cartridge stem, unscrew the handle rod, and use a allen key to tighten the grub screw to secure the handle. Then, screw the handle rod back in place.

REPLACING THE AERATOR



Note:

The built-in aerator is equipped with an internal flow restrictor, while the extra aerator included in the box does not have one. You can switch them based on your needs.

Nero

